

Season 55 | 2020-2021

*"To play without passion
is inexcusable!"* - Ludwig van Beethoven



PRINCE GEORGE'S PHILHARMONIC

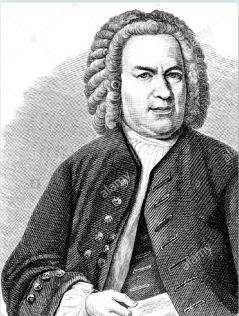
JESUS MANUEL BERARD, *MUSIC DIRECTOR*





PRINCE GEORGE'S PHILHARMONIC

JESUS MANUEL BERARD, *MUSIC DIRECTOR*



Johann Sebastian Bach

October 10, 2020 - 7:30 pm

Join us on our YouTube Channel for a pre-recorded concert (no audience) direct from the Grand Theater.

*Grand Theater, Center for Performing Arts
Prince George's Community College, Largo, MD*

BACH: Brandenburg Concerto No. 3

GRIEG: *Holberg Suite*



Antonín Dvořák

November 14, 2020 - 7:30 pm

Join us on our YouTube Channel for a live stream concert (no audience) direct from the Grand Theater.

*Grand Theater, Center for Performing Arts
Prince George's Community College, Largo, MD*

ALBINONI/GIAZOTTO: Adagio

WALKER: *Lyric for Strings*

DVORAK: Serenade

Welcome to— a new season of sound!

Saturday, February 13, 2021-7:30 pm

*Grand Theater, Center for Performing Arts
Prince George's Community College, Largo, MD*

MÁRQUEZ: Danzón No. 2

SELECTIONS TBD

Chelsey Green and The Green Project

PRICE: Symphony No. 1



Chelsey Green

Saturday, March 27, 2020-7:30 pm

Bowie Center for the Performing Arts, Bowie, MD

BEETHOVEN: Overture to *Egmont*

BEETHOVEN: Violin Concerto

Emil Chudnovsky, *violin*

BEETHOVEN: Symphony No 5



Emil Chudnovsky

May 2021

Date and time to be determined

Dekelboun Concert Hall

Clarice Smith Performing Arts Center, College Park, MD

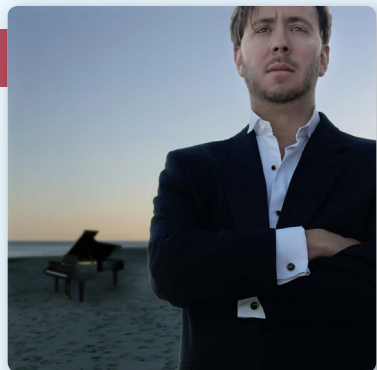
RAVEL: *Bolero*

RACHMANINOFF: Piano Concerto No. 2

Thomas Pandolfi, *piano*

BAYOLO: *Colorfields*

RESPIGHI: *The Pines of Rome*



Thomas Pandolfi



Welcome!

Our 55th season together promises to be both unusual and exciting. In a way, it will consist of two seasons — and *two orchestras* — in one!

Our fans will remember that the pandemic curtailed the second half of our last season by closing venues down. Alas, the first half of this season doesn't look much different in that respect. So, uncertain and challenging times call for some problem solving — and a lot of creative programming!

As venues continue to be closed through at least November, our “other orchestra,” members of the Philharmonic's strings, will perform two programs of masterpieces of the chamber string orchestra repertoire onstage in “virtual,” live-streamed concerts, which will be available on our new YouTube channel.



Prince George's County Executive
Angela D. Alsobrooks assists as conductor
with Music Director, Jesus Manuel Berard

Because so many people were looking forward to the final concerts of our 2019-20 season, we will be performing the music of Ravel, Rachmaninoff, Bayolo and Respighi from those programs for this season's finale at The Clarice. Also, this season, we will collaborate with exciting Billboard crossover artist Chelsey Green, perform music of the pioneering African American woman Florence Price and the popular Mexican composer Arturo Márquez, and celebrate Beethoven's 250th birthday with some of his most beloved works.

Many changes have been made as we've risen to the challenges of the pandemic, but the most important things remain steadfast:

our *community* with each other and with you, the *quality* of our programming and performances, and the *diversity* of our orchestra, our repertoire and our audience. This season we will enjoy the music of African American, Czech, English, French, German, Italian, Latin American, Norwegian and Russian composers from the 18th, 19th, 20th and 21st centuries.

Diversity is essential to our identity as the Prince George's Philharmonic. We could not exist without it, nor would we want to. Black Lives have always deeply mattered to us. Now more than ever, we join in solidarity and in music with our brothers and sisters everywhere.

We look forward to sharing great music again with all of you very soon.

Jesus Manuel Berard, *Music Director*

PRESIDENT'S LETTER



*Susan Pearl, President
Board of Directors*

How does one welcome one's wonderful audience after the end of a season like our last one? Our 54th season started out so well, opening a brand new concert venue, and performing, after a 30-year hiatus, our joyful Holiday concert - but then being cancelled by a pandemic that we could not have predicted. It was a terrible disappointment to all of us not to share with you our March and May concerts, and we have worked hard to keep in touch with you through the on-line platforms available to us. We have been thrilled by the response to our 2019 concert of Gustav Holst's "The Planets" now online, and to our Principal Cellist Doug Jameson's marvelous study of the Bach preludes. We will soon make more performances accessible to you

online, and we hope that you will keep checking our website pgphilharmonic.org for links to these performances.

So now, as we approach the time when we would normally start our 55th season, we are carefully following the guidelines for safety and health, and planning our two fall concerts on a smaller scale - strings only (masked, of course), with reduced numbers of players, allowing safe distancing among the musicians. We will perform these two concerts in an empty hall, recording them for your listening pleasure online. We hope and expect to return to our normal practice in February 2021, again at the Community College - and then our regular March and May concerts at Bowie Center and The Clarice.

It has been a difficult year for all of us, and we hope that you and your families have remained safe and well throughout it. Nothing like this has ever occurred in the 55 years that our Philharmonic has been performing. A few performances over the years have been delayed by weather, but nothing before has so profoundly altered our performance schedule. We can hardly wait to get back to our regular rehearsals and performances. We thank you so much for the generous support that many of you have given to help us get through the last few months, and we promise that as soon as we safely and possibly can, we will return to bringing you a full season of great music!

Thank you again, and please stay safe and well!

Susan G. Pearl

*Susan G. Pearl, President
Board of Directors*



EDUCATIONAL OUTREACH & SYMPHONY KIDS

The Anne Gentry Educational Outreach Program provides free music instruction to deserving Prince George's County public school students who would otherwise be unable to engage in such instruction. Students in the Anne Gentry Educational Outreach Program, also known as "Symphony Kids," receive one-on-one music lessons with a qualified teacher during the school year, perform in an annual recital, and receive free tickets for their parents/guardians to attend Philharmonic concerts.

In addition, our educational outreach program offers an annual side-by-side for selected students, occasional masterclasses led by our guest artists, and an annual celebration of Music in Our Schools.

For more information, contact Kevin Gillis, 301-446-3245.



Let's stay connected!

BE SURE TO CHECK OUT
OUR UPDATED WEBSITE
www.pgphilharmonic.org

LIKE US ON FACEBOOK
www.facebook.com/PGPhilharmonic

LISTEN ON YOUTUBE
www.youtube.com/channel/UCEUleQbeqtmzomkj5LjbTxQ

Our resilience depends upon your generosity.

During this unusual time, the Philharmonic is suspending its subscription drive for the 2020 - 2021 season.

The live stream concerts planned for October and November 2020 will NOT require a subscription or a ticket.

A subscription drive will be held towards the end of 2020 once we can absolutely confirm the planned, full orchestra concerts for the Spring of 2021.

At this time, we would ask that you please consider making a donation. All arts organizations are under tremendous financial stress at this time due to the pandemic. Your donation, no matter the amount, will make the difference in our future.

We are extremely thankful to all of you who have made a contribution to the Philharmonic. We look forward to seeing you in the concert hall soon.

Thanks for supporting your Philharmonic!

Name _____

Address _____

City _____ State _____ Zip _____

Email _____

Telephone: Primary _____ Secondary _____

Your Tax Deductible Donation \$ _____

Please make checks payable to **Prince George's Philharmonic** and mail to:

*Prince George's Philharmonic
PO Box 1111, Riverdale, MD 20738*

Donations may also be made online through PayPal.

Visit our website at pgphilharmonic.org and click the PayPal link.

Subscriptions for the spring 2021 concerts will be available at a later date.





PRINCE GEORGE'S PHILHARMONIC

Prince George's Philharmonic
PO Box 1111, Riverdale, MD 20738

Season 55 | 2020-2021



Made possible in part through funding provided by the Prince George's County Council; The Maryland-National Capital Park and Planning Commission, Department of Parks and Recreation, Prince George's County, and the Maryland State Arts Council.

